

OUTDOOR RETRACTABLE PERGOLA ROOF



Retractable pergola is widely used in the outdoor space of high-end hotels, shopping malls, clubs, villas and so on to increase the use space.

As the latest generation of outdoor shading system solution, retractable pergola has incomparable advantages:

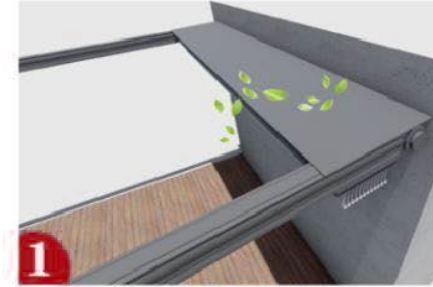
- The structural strength is better than that of the tent
- PVC membrane material can realize complete water proof and sunshade
- Advanced electronic control system intelligent control LED light system& retractable system. Retractable pergola is the best choice for large-scale outdoor expansion scheme!



OUTDOOR INTELLIGENT RETRACTABLE AWNING



ADVANTAGE



The water baffle effectively blocks the dust and the rain when it is closed. It can protect the motor and sunshade fabric and keep it clean and beautiful.



The track is designed with rain proof strips, which are made of polyurethane special rubber for vehicles. The rainproof strips are combined with the frame to guide the rainwater to the sink. The design is practical.



Remote control



Hollow column



LED light

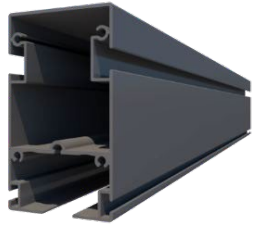


Aluminum alloy material has strong corrosion resistance. The guide rail directs the water to the sink. The rainwater in the sink flows to the hollow column, which is more scientific and practical.

T500 SPEVIFICATION

T500

Unit:mm



Name: **T500 Rail**

Material: Alloy

Specification:

110*64*2

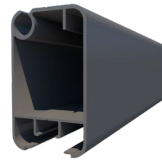


Name: **T500 Big crossbar**

Material: Alloy

Specification:

76*60*1.3



Name: **T500 Small crossbar**

Material: Alloy

Specification:

60*36*1.3



Name: **T500 Gutter**

Material: Alloy

Specification:

150*125*2.5



Name: **T500 Pillar**

Material: Alloy

Specification:

125*90*2



Name: **T500 Water baffle**

Material: Alloy

Specification:

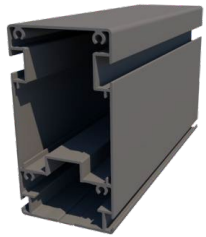
110*13.8*0.5

Regular color	Grey, White; Customized
Material	Aluminum alloy
Size	Max width: 8m, Max extend: 5m
Surface	Powder coating / Anodizing
Bar spacing	500MM
Motor	2-year warranty
Led Warranty	2-year warranty
Rainproof	100% Waterproof

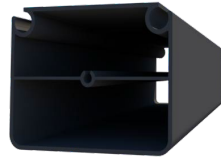
T700 SPEVIFICATION

T700

Unit:mm



Name: **T700 Rail**
Material: Alloy
Specification:
130*70*1.5



Name: **T700 Big crossbar**
Material: Alloy
Specification:
76*60*1.3



Name: **T700 Small crossbar**
Material: Alloy
Specification:
60*36*1.3



Name: **T700 Gutter**
Material: Alloy
Specification:
150*125*2.5



Name: **T700 Pillar**
Material: Alloy
Specification:
125*90*2



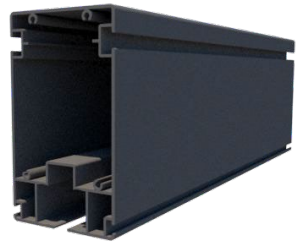
Name: **T700 Water baffle**
Material: Alloy
Specification:
110*13.8*0.5

Regular color	Grey, White; Customized
Material	Aluminum alloy
Size	Max width: 8m, Max extend: 7m
Surface	Powder coating / Anodizing
Bar spacing	500MM
Motor	2-year warranty
Led Warranty	2-year warranty
Rainproof	100% Waterproof

T900 SPEVIFICATION

T900

Unit:mm



Name: **T900 Rail**

Material: Alloy

Specification:

170*98*2.5

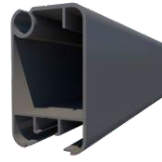


Name: **T900 Big crossbar**

Material: Alloy

Specification:

76*60*1.3



Name: **T900 Small crossbar**

Material: Alloy

Specification:

60*36*1.3



Name: **T900 Gutter**

Material: Alloy

Specification:

150*125*2.5



Name: **T900 Pillar**

Material: Alloy

Specification:

125*90*2



Name: **T900 Water baffle**

Material: Alloy

Specification:

110*13.8*0.5

Regular color	Grey, White; Customized
Material	Aluminum alloy
Size	Max width: 8m, Max extend: 9m
Surface	Powder coating / Anodizing
Bar spacing	500MM
Motor	2-year warranty
Led Warranty	2-year warranty
Rainproof	100% Waterproof

T1200 SPEVIFICATION

T1200

Unit:mm



Name: **T1200 Rail**
Material: Alloy
Specification:
200*130*2.5



Name: **T1200 Big crossbar**
Material: Alloy
Specification:
80*80*1.5



Name: **T1200 Small crossbar**
Material: Alloy
Specification:
80*45*1.5



Name: **T1200 Gutter**
Material: Alloy
Specification:
180*150*3



Name: **T1200 Pillar**
Material: Alloy
Specification:
170*170*3

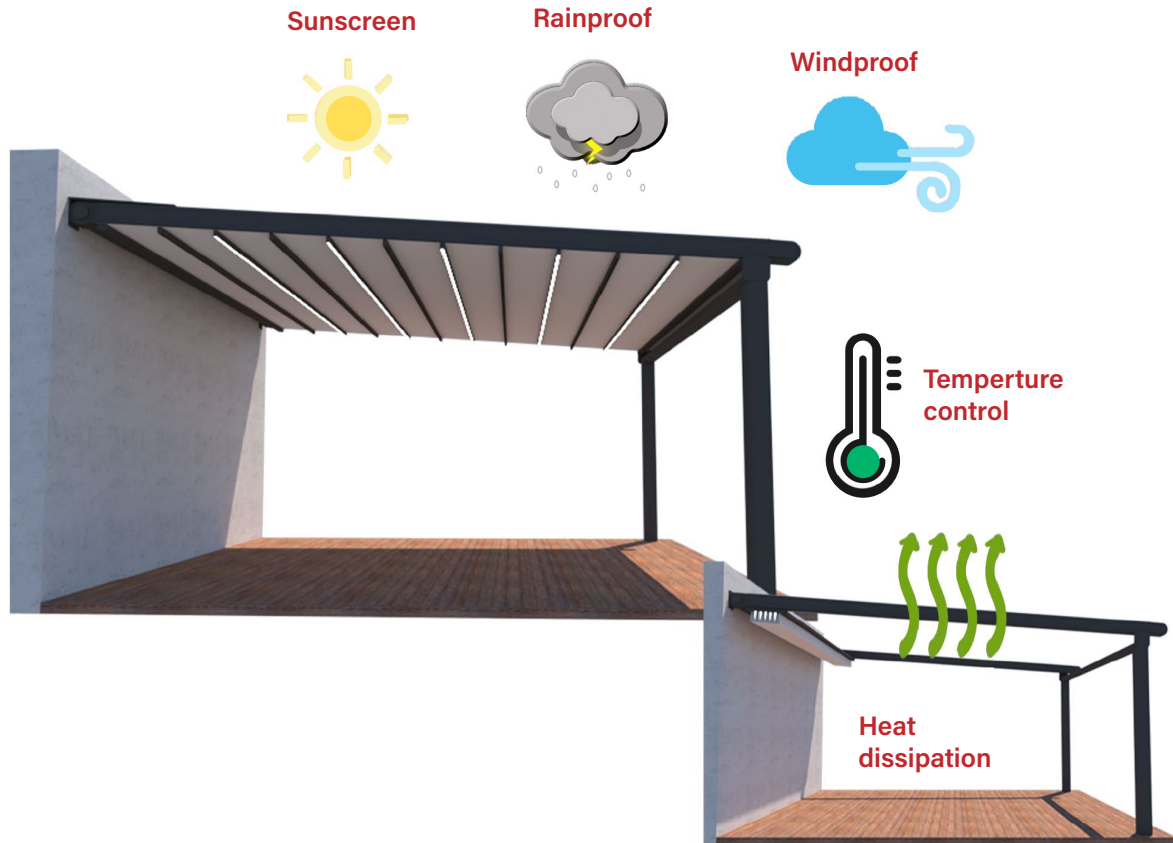


Name: **T1200 Water baffle**
Material: Alloy
Specification:
110*13.8*0.5

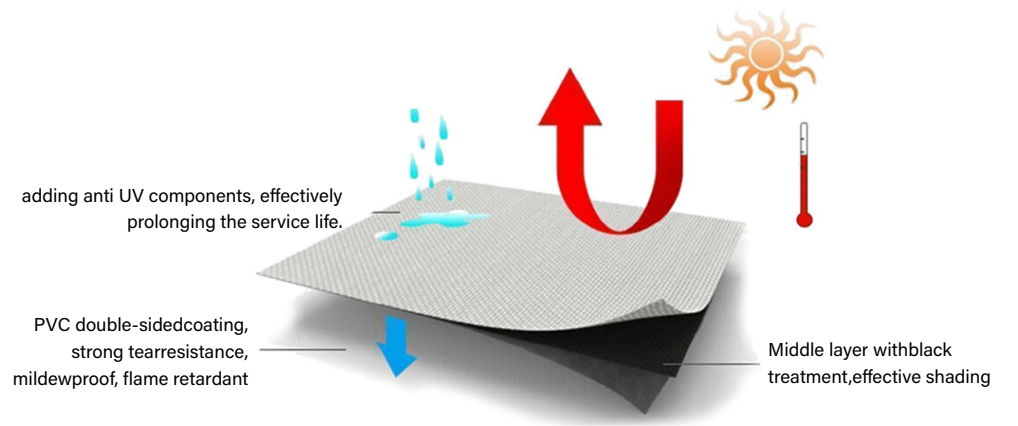
Regular color	Grey, White; Customized
Material	Aluminum alloy
Size	Max width: 8m, Max extend: 12m
Surface	Powder coating / Anodizing
Bar spacing	500MM
Motor	2-year warranty
Led Warranty	2-year warranty
Rainproof	100% Waterproof

INTRODUCTION

As a popular sunshade product in Europe, the retractable roof has been crafted with ingenious design and refined through multiple improvements before it was launched into the market, earning the favor of a vast number of users. The product is practical and attractive, and demonstrates excellent performance in sun protection, rain and wind resistance, and UV resistance.



Made with imported **Sauleda®** fabric from Spain
800 g/m² (made with **PVC material**)
 Saturated colors that resist fading and excellent waterproof and fire-resistant properties
 More dirt-resistant and easy to clean



FABRIC INTRODUCTION


Spain Sauleda Fabric

Fabric Material	At1100dtex high tenacity polyester
Tensile Strength	Radial 270daN/5cm, Weft 230daN/5cm.
Fabric Thickness	0.64mm
Temperature Resist	-30°C ~70°C
Fire Rating	M2
Fabric Weight	830g/m ²




Warranty
of up to **10 YEARS**

Only truly great brands dare to make promises.
• Under normal use, the lifespan of the fabric can last up to 10 years.



Tel: +34 93 339 71 50 Fax: +34 93 411 1
Email: sauleda@sauleda.com
www.sauleda.com

SAULEDA, S.A.
TRAVESERA DE LAS CORTS, 102
08028 BARCELONA (SPAIN)



Cube

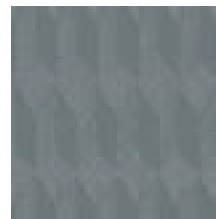
FICHA TÉCNICA TECHNICAL FEATURES	RESULTADOS RESULTS	ENSAYO ESSAY
ANCHO WIDTH	250 - 300 cm	
TEJIDO FABRIC	Poliester AT 1100 dtex Polyester high tenacity	
RECUBRIMIENTO COATING	PVC 2 CARAS PVC COATING 2 FACES	
PESO WEIGHT	830 g/m ²	EN ISO 2286.2
ACABADO FINISH	Lacado 2 CARAS Lacquered 2 FACES	
ESPESOR THICKNESS	0,64 mm	
RESISTENCIA TRACCION TENSILE STRENGTH		
URDIMBRE/WARP	270 daN/5cm	
TRAMA/WEFT	230 daN/5cm	UNE EN ISO 1421
RESISTENCIA DESGARRE TEAR STRENGTH		
URDIMBRE/WARP	25 daN	
TRAMA/WEFT	20 daN	EN ISO 13937.2
ADHERENCIA ADHESION	10 daN/5cm	
RESISTENCIA TEMPERATURA TEMPERATURE RESISTANCE	-30° + 70° C	
IGNIFUGO FIRE RETARDANT	M2	UNE 23.727.90
LONGITUD DE LAS PIEZAS ROLL LENGTH	50 ml	

Todos los valores pueden variar según una tolerancia de +/- 5%.
Garantía 5 años de cualquier defecto imputable al tejido y que se demuestre que el mantenimiento ha sido el correcto.
Nota: los valores y tolerancias de este documento corresponden a nuestro nivel actual de conocimiento, experiencia de muchas producciones y se refieren al material en su estado original.
Son orientativos y no tienen ninguna validez legal. El cliente no está exento de probar si el artículo es apropiado para su aplicación. Sauleda S.A. se reserva el derecho de modificar esta ficha técnica cuando lo crea oportuno.

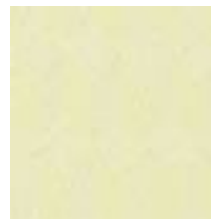
FABRIC INTRODUCTION

Fabric Made By China

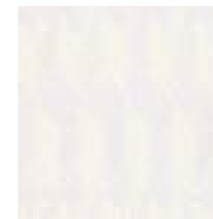
Fabric Material	PVC + Polyester
Tensile Strength	Radial 3210N, Weft 2887N
Tear Strength	Radial 324N, Weft 294N
Fabric Thickness	0.68m
Color fastness	UV grade 4
Fire Resistance Level	GB/T 5455-2014
Fabric Weight	835g/m ²
Warranty	10 years for PVC fabric



Grey



Beige

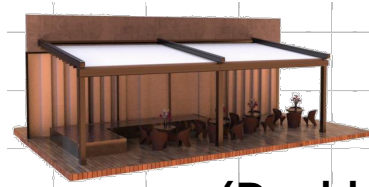


White

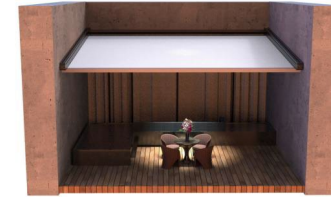
FABRIC INTRODUCTION



A. Wall support type



(Double Group)



E. Card wall type



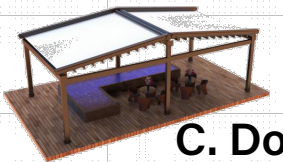
B. Pillar support type



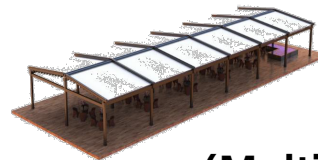
(Double Group)



F. Pull rod type



C. Double column support type



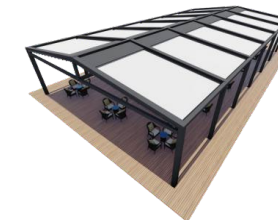
(Multi Group)



D. Curved arc column support type



(Double Group)



G. Steel structure support hoisting

REAL CASE



Case:

Private clubs

Installation method:

Double column support type

REAL CASE



Case:

Factory outdoor parking lot

Installation method:

Steel structure support hoisting

Area:310m²



REAL CASE



Case:

Chengdu hot pot restaurant dining area

Installation method:

Curved arc card wall type

REAL CASE



Case:

Outdoor restaurant dining area

Installation method:

Steel structure support hoisting

Area:192m²

REAL CASE



Case:

Bar dining area

Installation method:

Pillar support type

Area: **110m²**



REAL CASE



Case:

Outdoor restaurant dining area

Installation method:

Steel structure support hoisting

Area:318m²





STARGATE
— GLOBAL SOLUTIONS —

DESIGN SKETCH

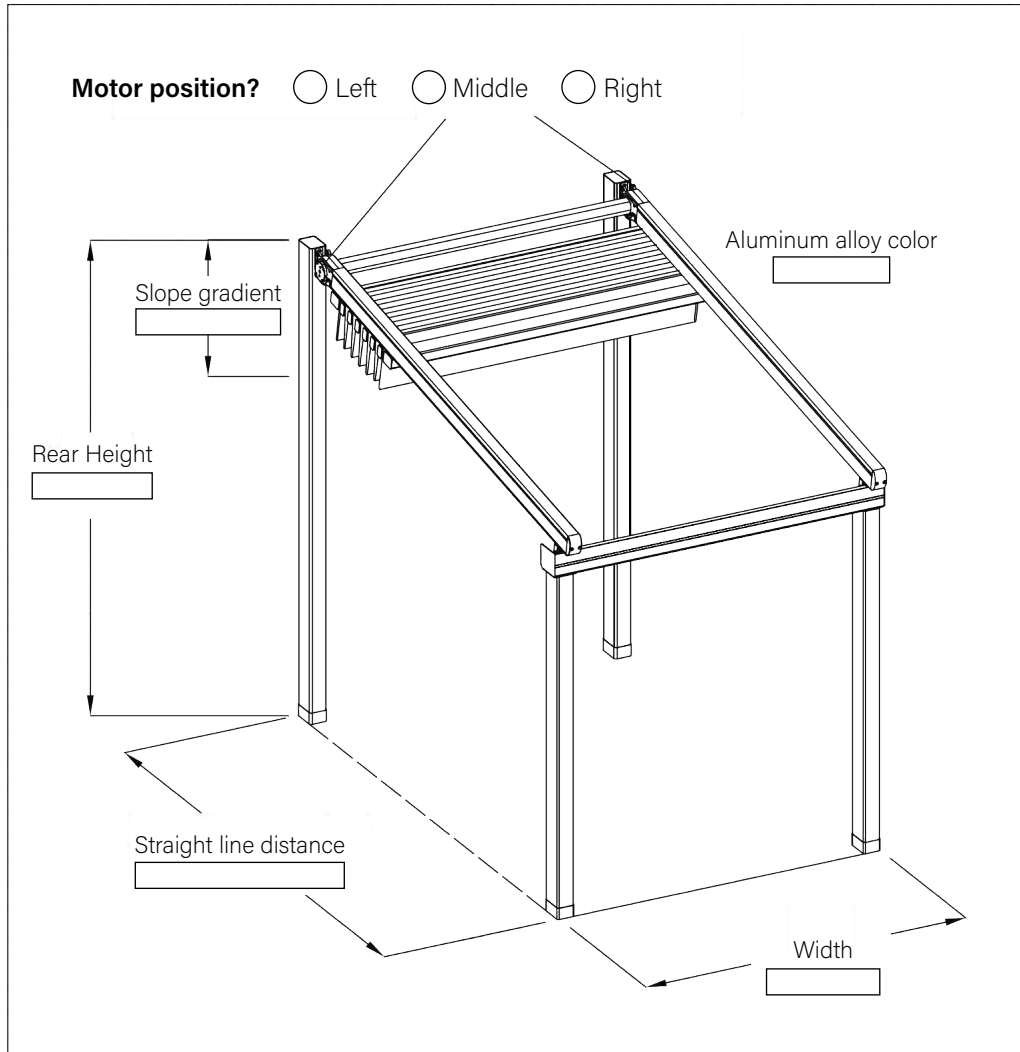
Closed



Open



ORDERDETAIL



Note:

Ready to source smarter? Get your personalised quote — fast.

➡ **WhatsApp:** +27 79 721 1109

✉ **Email:** info@stargate.ltd

🔗 Or scan the **QR code:**



✉ *Simply share your **name, company, delivery address,** and **the products you need** (reference numbers or screenshots) with **quantities** — our team takes care of the rest.*