



**STARGATE**  
— GLOBAL SOLUTIONS —

WWW.STARGATE.LTD  
Cape Town, South Africa  
Hong Kong

# **OUTDOOR ALUMINUM ALLOY SUN SHADING CANOPY**

PRODUCT TRAINING PPT



Product  
Articles

1

PRODUCT KNOWLEDGE EXPLANATION

2

COMPARISON OF PRODUCT ADVANTAGES

3

PRODUCT INSTALLATION EXPLANATION

4

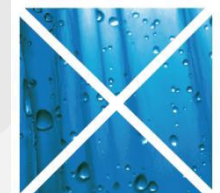
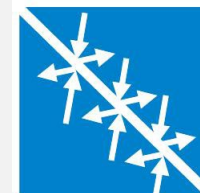
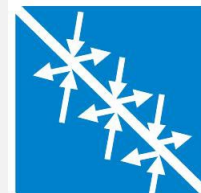
PRODUCT SUMMARY

# PRODUCT DESCRIPTION

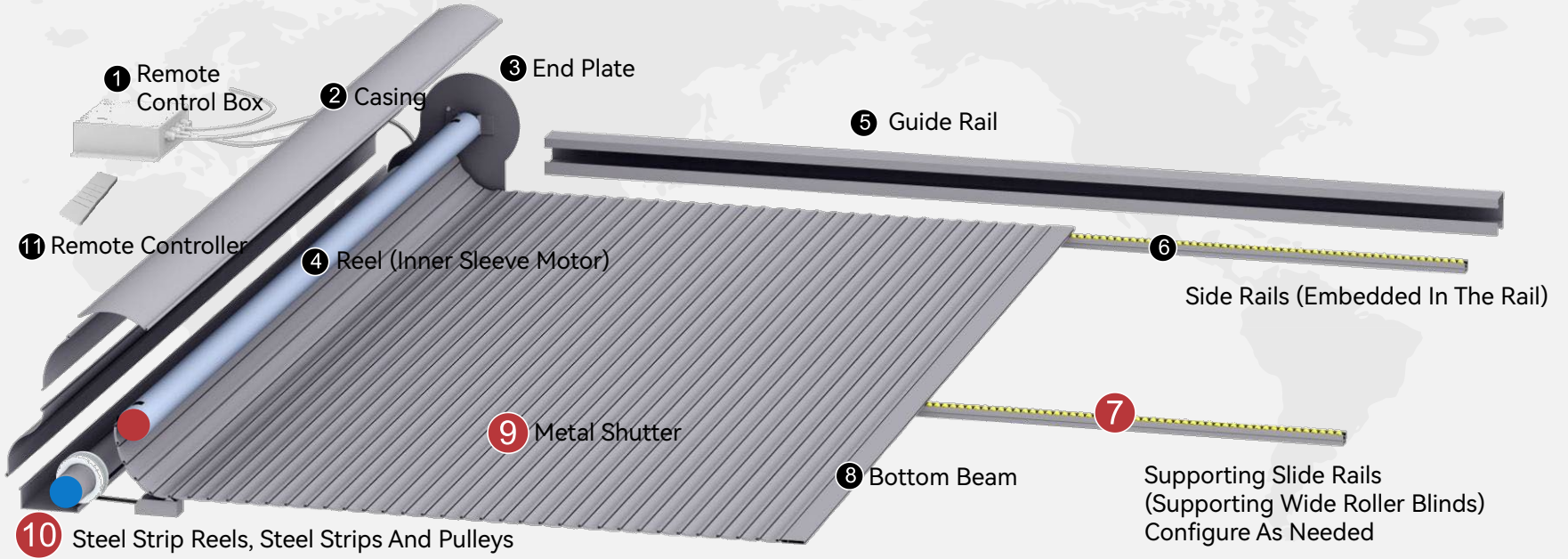
- Product Name: Outdoor aluminum alloy sunshade canopy
- Application places: residential sun room, commercial lighting roof



## ➤ Product Features:



# PRODUCT STRUCTURE



## FTS DUAL MOTOR SYSTEM



■ **DM45FTS-40/12 FTS special motor 2 unit/set**

■ **Rated Torque: 40Nm/unit**

■ **Rated Power: 255W/unit**

■ **Rated current: 1.11A/unit**

- **Nord System brand motor as an example**
- **Imported Somfy motors can also be selected**

# ROLLER BLINDS, COLORS, PARAMETERS

55# series full blackout roller blinds  
(aluminum alloy + polyurethane foam)



**Production parameters:**  
The maximum production area of a single set: 30m<sup>2</sup>  
The maximum production width of a single set: 5m  
The maximum production length of a single set: 6m

42# series full blackout roller blinds  
(aluminum alloy + polyurethane foam)



**Production parameters:**  
The maximum production area of a single set: 12m<sup>2</sup>  
The maximum production width of a single set: 3.5m  
The maximum production length of a single set: 3.5m

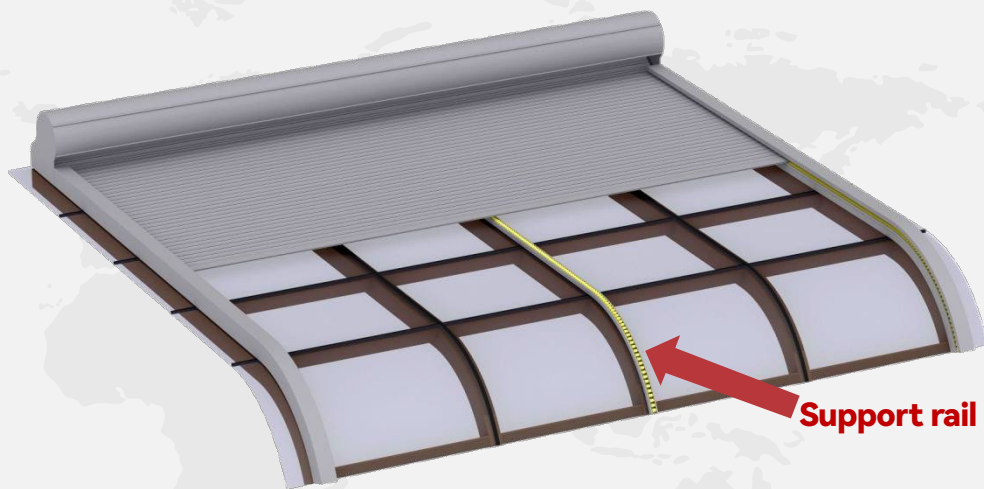
35# series "Gypsophila" roller blinds  
(aluminum alloy profiles with light holes)



**Production parameters:**  
The maximum production area of a single set: 20m<sup>2</sup>  
The maximum production width of a single set: 5m  
The maximum production length of a single set: 6m

Description of production parameters: the length and dimension are beyond the range and can be customized. The width dimension needs to consider the local transportation conditions and the maximum transportation size of the elevator for high-rise residential buildings, so as to prevent inconvenience to transportation, installation and after-sales.

## RELATIONSHIP BETWEEN WIDTH AND NUMBER OF RAILS



■ Determination of the number of supporting slide rails. First, confirm the number of divisions in the width direction of the skylight occupied by the single canopy.

■ According to the number of divisions and the selected shutter specifications, directly query the form.

- Setting principles for supporting slide rails:
- A. 55 roller blinds are evenly distributed according to the number of divisions, and the uniform spacing is controlled below 2.5 meters.
  - B. 35 roller blinds are evenly distributed according to the number of divisions, and the uniform spacing is controlled below 2 meters.
  - C. 42 roller shutters, each grid must be set

Roller blind specification name	The number of lighting roof grids occupied by a single set of roller blinds						
	No	3 grids	4 grids	5 grids	6 grids	7 grids	8 grids
55# roller blind support slide rail quantity	2 grids	2 sticks	1 sticks	2 sticks	2 sticks	3 sticks	3 sticks
42# roller blind support slide rail quantity	1 sticks	2 sticks	3 sticks	4 sticks	5 sticks	6 sticks	7 sticks
35# roller blind support slide rail quantity	No	2 sticks	1 sticks	2 sticks	2 sticks	3 sticks	3 sticks

# SUMMARY

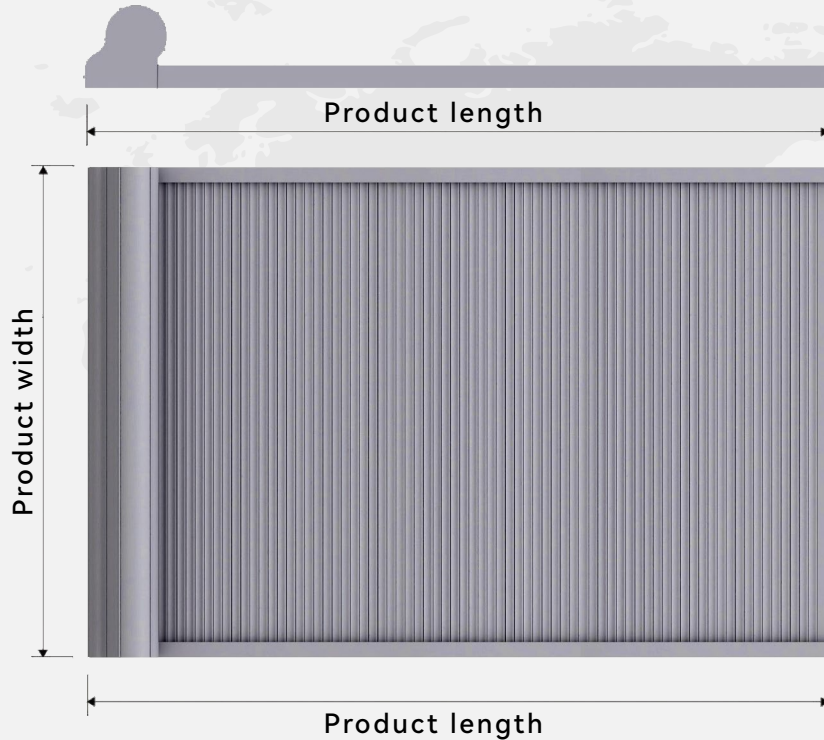
**The most basic aluminum alloy canopy & most important content**

1. Familiar with the operating principle of the product
2. How to choose the blade correctly
3. How to determine the number of supporting slide rails



**PRODUCT SIZE**

# DEFINITION OF WIDTH AND LENGTH



■ In general, the direction of water flow on the top of the sun room (from high to low) is the length direction of the product.



# THE RELATIONSHIP BETWEEN THE PRODUCT LENGTH AND THE SIZE OF THE SHUTTER BOX



2#:  $0 < L \leq 2\text{m}$ ,  $A = 265\text{mm}$ ;  $B = 265\text{mm}$

3#:  $2 < L \leq 3\text{m}$ ,  $A = 310\text{mm}$ ;  $B = 300\text{mm}$

4#:  $3 < L < 4\text{m}$ ,  $A = 340\text{mm}$ ;  $B = 320\text{mm}$

5#:  $4 < L \leq 5\text{m}$ ,  $A = 370\text{mm}$ ;  $B = 345\text{mm}$

6#:  $5 < L < 8\text{m}$ ,  $A = 460\text{mm}$ ;  $B = 430\text{mm}$



## SIZE MEASUREMENT



**STARGATE**  
— GLOBAL SOLUTIONS —

### A. Measurement method of flat top

Product length = total glass length (flowing direction)

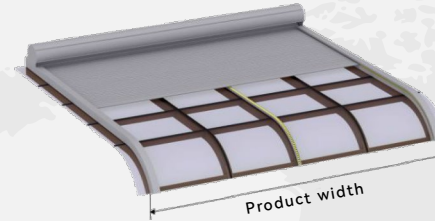
Product width = overall width of the outer opening of the top frame (load bearing)



# SIZE MEASUREMENT

## B. Measurement method of arc top

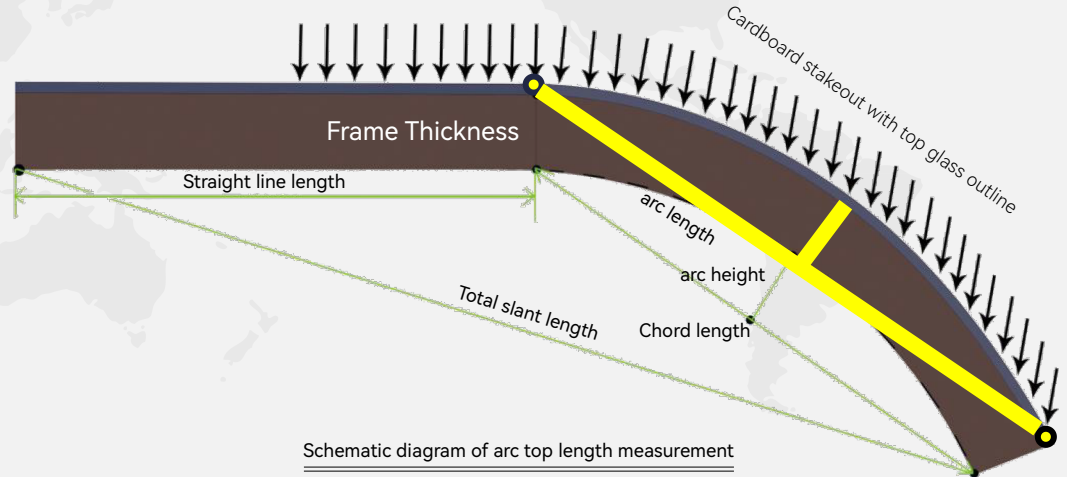
Product length = straight line length + arc length  
 Product width = the overall width of the outer opening of the top frame



### ◆ Measure arc length

Method 1: Direct on-site stakeout

Method 2: top frame arc length + chord length + chord height + frame thickness + glass thickness + total slant length



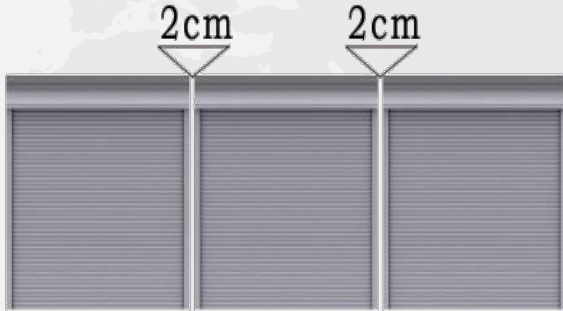
Schematic diagram of arc top length measurement

## SIZE MEASUREMENT



### ◆ Measurement Notes:

- When multiple sets of sky screens are arranged side by side, leave a gap of 2cm in the width direction.
- Pay attention to whether the width and length of the product are affected by the eaves.

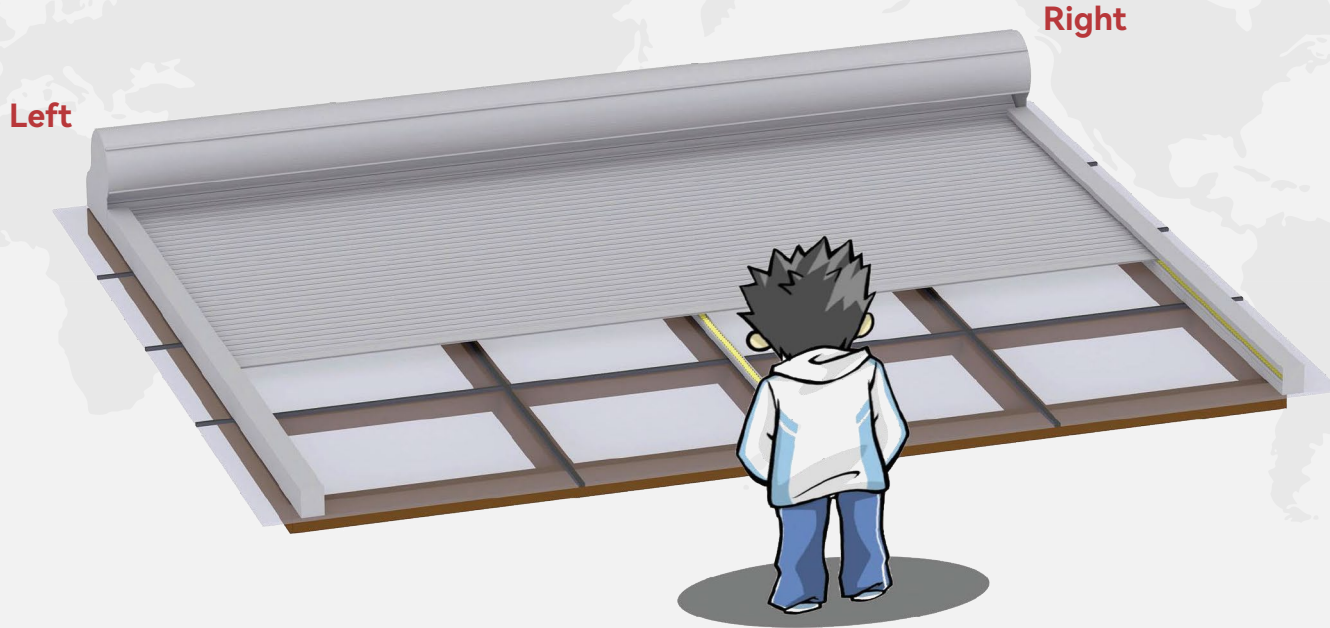


## POWER SUPPLY DIRECTION



### ■ Principles for identifying the direction of the power supply:

Left and right are defined by the left/right side of the measuring person facing the roller blind.



## **CONCLUSION:**

After the size measurement of the aluminum alloy canopy is completed, the following elements need to be clarified



Width, length, direction of power supply, number of supporting slide rails, roller shutter specification, color, other remarks (site terrain size, site photos)



# **PRODUCT MAKING PLAN**

## COMMON SCHEME



STRAIGHT TYPE	PICTURE CASE
 A schematic diagram of a straight type gutter. It shows a black silhouette of a person's head and shoulders on the left, with a horizontal line extending to the right. The line is solid black until it reaches the gutter, which is represented by a series of parallel diagonal lines.	 A photograph showing a brown, picture case style gutter installed on a roof. The gutter is a deep, rectangular channel with a flat top surface. In the background, there is a large green lawn and a multi-story building on a hillside.

## COMMON SCHEME

ARC SHAPE



PICTURE CASE



## COMMON SCHEME



PUSH SLOPE TYPE



PICTURE CASE



## COMMON SCHEME

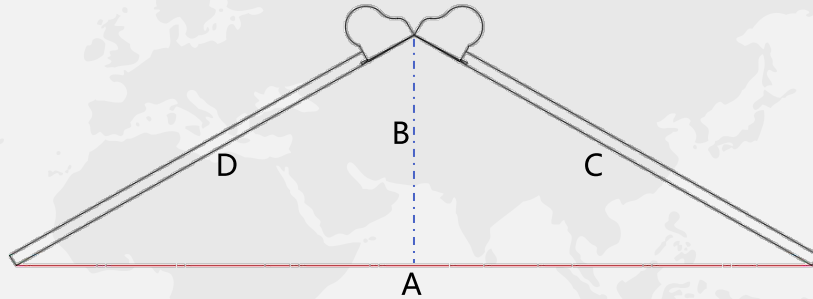
SLOPE TYPE-1	PICTURE CASE
 <p>A schematic diagram showing a cross-section of a roof slope. A black silhouette of a person is positioned on the left side of the slope, looking towards the right. The slope is represented by a series of parallel diagonal lines, indicating a downward incline.</p>	 <p>A photograph of a real-world roof slope. The roof is covered with dark grey corrugated metal panels. A white gutter runs along the edge of the roof. The background shows a clear sky and some distant structures.</p>

## COMMON SCHEME

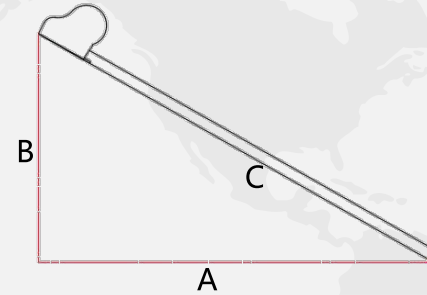
SLOPE TYPE-2	PICTURE CASE
 <p>A schematic diagram of a roof slope. It features a solid black circle at the top left, representing a roof edge or a specific component. A diagonal line extends from this circle towards the bottom right, with a series of small, parallel diagonal lines along its length, suggesting a textured surface or a specific material profile.</p>	 <p>A photograph showing a real-world application of a roof slope. The roof is covered in light-colored, vertically ribbed metal panels. Two dark, cylindrical roof vents are visible on the slope. The background shows a street with trees and a building, indicating an urban or suburban setting.</p>

## COMMON SCHEME

### DOUBLE SLOPE ROOF



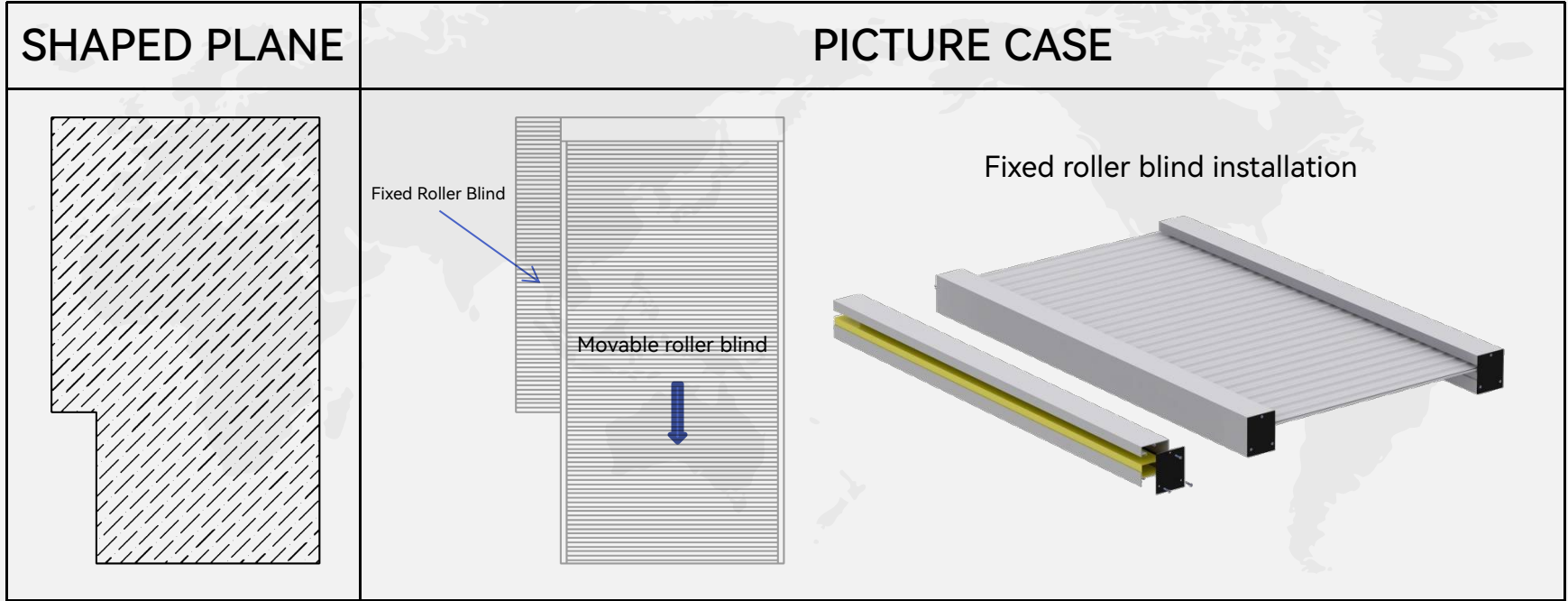
### SINGLE SLOPE ROOF



### PRODUCT SCHEME:

Please indicate the size details and the picture of the top surface on site; determine the use of **single-motor or dual-motor drive system** based on the tilt angle and weight calculation.

# COMMON SCHEME



## FEATURED PROGRAM



PICTURE CASE



PICTURE CASE





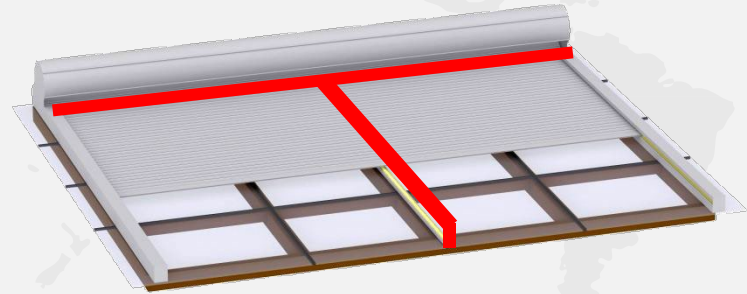
**PRODUCT WINDPROOF  
SOLUTIONS**

## WINDPROOF MEASURES

A. Equipped with wind and rain sensor:  
Wiring form, lithium battery two kinds



B. Making windproof square pipe brackets (high-rise buildings)





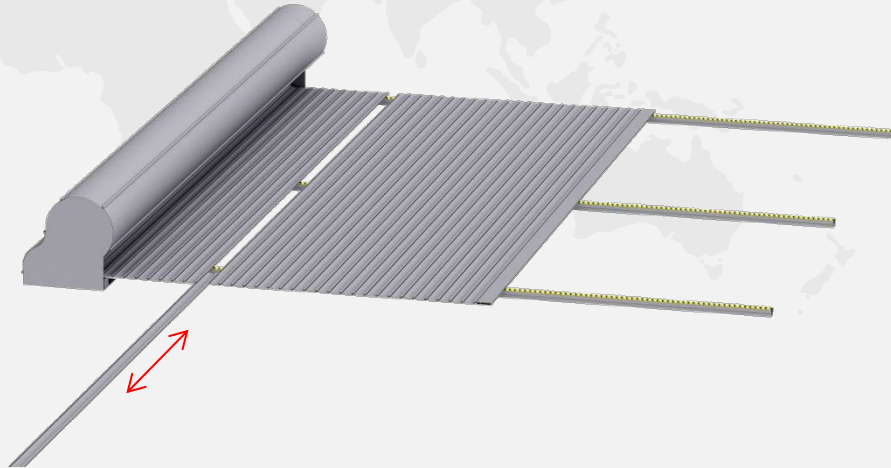
**THE SOLUTION TO PRODUCT  
OVERWEIGHT**

## WEIGHT BREAKDOWN



### Solutions for product weight handling and installation:

- A. When leaving the factory, the roller blind is disassembled into two rolls (packed in two cartons), and the roller blind is connected on site
- B. After the arrival of the goods, the ground is disassembled on site, and the roller blind is connected on the installation surface.



## WEIGHT PARAMETER



### Weight of roller shutter box (housing & reel)

Roller shutter box model	Weight	Unit
2#	6.2	KG/M
3#	6.9	KG/M
4#	7.6	KG/M
5#	8.5	KG/M
6#	10.5	KG/M

### Roller shutter and guide rail (slide rail) weight

Roller blind model	Weight	Unit
55#	3	KG/m <sup>2</sup>
42#	2	KG/m <sup>2</sup>
35#	6.5	KG/m <sup>2</sup>
Guide rail + slide rail	1.5	KG/M



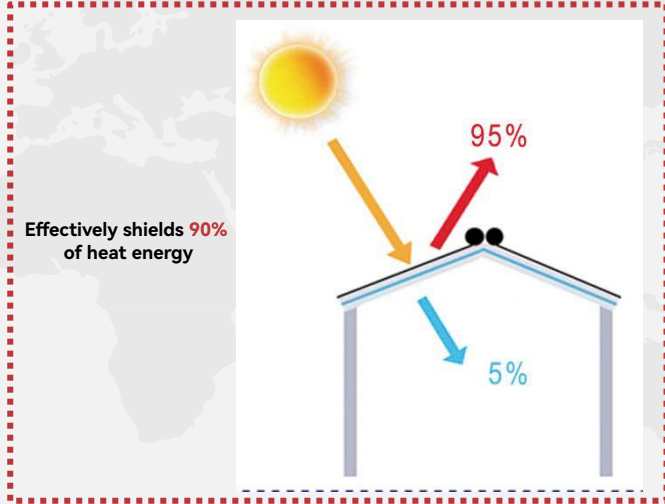
# **COMPARISON OF PRODUCT ADVANTAGES**

# COMPARISON OF ADVANTAGES

## SHADE EFFECT

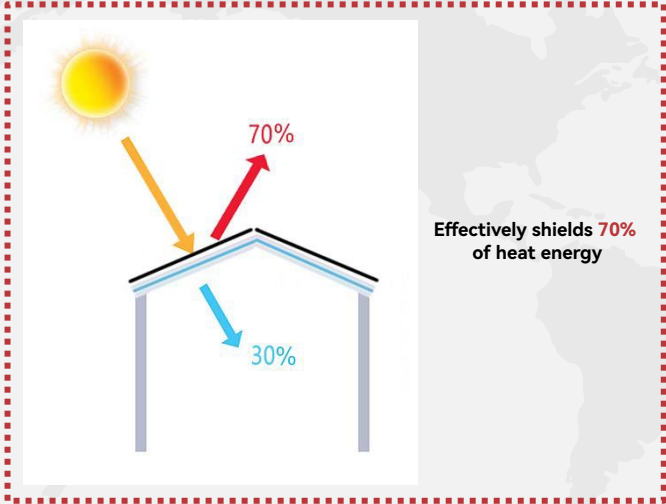


### Our Outdoor Aluminum Canopy



PK

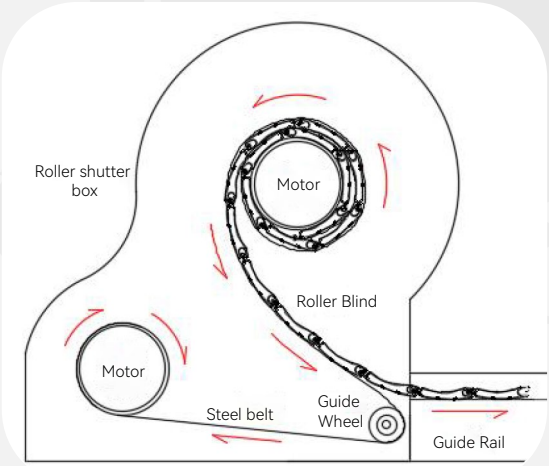
### Other People's Outdoor Canopy



# COMPARISON OF ADVANTAGES

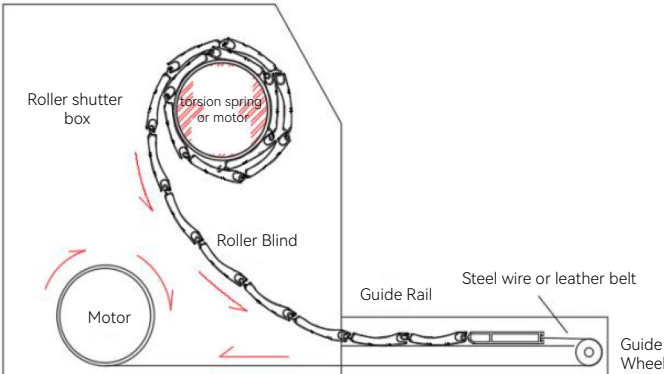
## STRUCTURAL PRINCIPLES

### Our Outdoor Aluminum Canopy



**Push-type** patented structure, the roller blind groove can be stretched and contracted, the foam is more and thicker, and the heat insulation effect is better.

### PK Other People's Outdoor Canopy



**Pull-type** structure, the roller blind is always in a state of tension, and the groove is not closed. It greatly affects the overall thermal insulation performance and service life of the sky screen.



# COMPARISON OF ADVANTAGES

## ROLLER BLIND

### Our Outdoor Aluminum Canopy



Roller blind width 55mm  
**Roller blind thickness 10mm**

The canopy is **opened** and the roller shutter is in state: **The groove is naturally sealed**



Canopy **retracted** roller blind state:  
**The groove unfolds naturally**



Adopt 35# light-transmitting roller blinds, which can fully cover or transmit a small amount of light ("starry sky" state), and the use effect is more comfortable.

### PK Other People's Outdoor Canopy



Roller blind width 42mm  
**Roller blind thickness 5.5mm**

Canopy open roller shutter status:  
**Groove stretch**



Canopy retracted roller shutter status:  
**Groove stretch**



The roller blind is always stretched and cannot be closed. **It is impossible to achieve full shading and light transmission at the same time, the groove wall is thin, and the heat penetrates directly, which affects the heat insulation effect.**



**STARGATE**  
— GLOBAL SOLUTIONS —

# COMPARISON OF ADVANTAGES MATERIALS

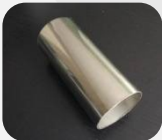
## Our Outdoor Aluminum Canopy



Shell aluminum alloy material, wall thickness **1.8mm**



End plate **stainless** steel material, wall thickness **2.5mm**



Reel **stainless** steel

**PK**

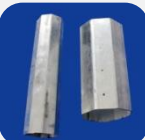
## Other People's Outdoor Canopy



Shell aluminum alloy material, wall thickness **0.8~1.2mm**



End plate galvanized **sheet/aluminum** alloy material, wall thickness **2.0mm**



Reel **galvanized pipe** material



# COMPARISON OF ADVANTAGES

## SHELL STRENGTH

### Our Outdoor Aluminum Canopy



The **arc-shaped modular plug-in** cover has excellent bending resistance, is not afraid of blizzard attacks, and is still straight at a **width of 6 meters**. It is more **cost-effective** to make a large size set.

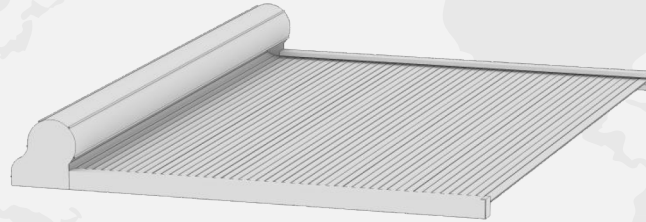
**PK**

### Other People's Outdoor Canopy



The **square mechanical roll forming** cover has average bending resistance, and the width exceeds 3 meters. The deformation is serious, and the heavy snowstorm will directly damage it. If it is too wide, it will be done in separate sets, which will increase the cost, and the size will not be large.

## OUR ABSOLUTE ADVANTAGE



The overall warranty is **3 YEARS**, and the motor quality problems are **replaced free** of charge during the warranty period

## OUR ABSOLUTE ADVANTAGE



**QUALITY PACKAGING**

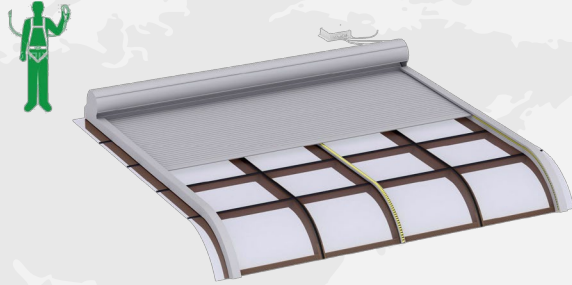
**BRAND IMAGE**

**COMPLETE DATA**



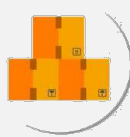
# **INSTALLATION EXPLANATION**

## INSTALLATION PRECAUTIONS

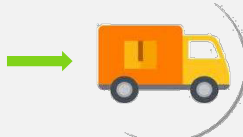


- 1. Safety belts should be worn when working at heights.**
2. It is slippery in rainy days, please do not install it.
3. Don't do it on the top of the sun room if it can be done on the ground.
4. Don't step on the central part of the glass and set your feet on the skeleton.
5. Do not step blindly on the edge of the sink.
6. The exposed wire ends are wrapped with waterproof insulating tape. The butt joints of the wire and tube are sealed to prevent water seepage.

# PRODUCT ARRIVAL FORM



FACTORY SHIPMENT



TRANSPORTATION



RECEIVE THE GOODS

DELIVERY STYLE



Added non-woven wrapping to effectively protect the surface and can also be used as a cleaning cloth



COMPONENT NAME



## INSTALLATION STEPS



1. Clean the glass top and dry it to prevent it from slipping.

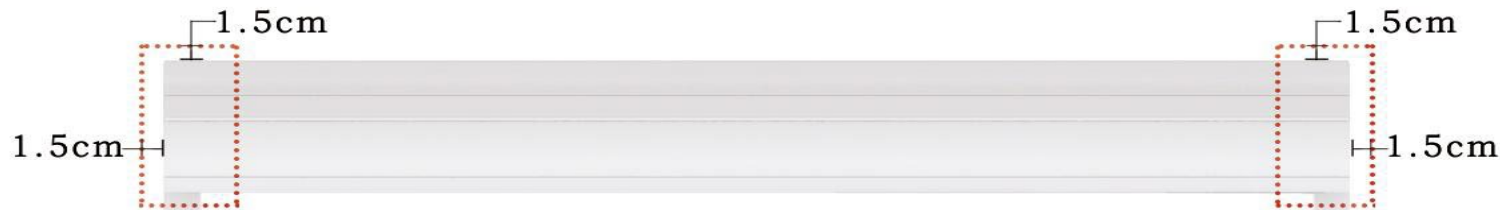


## INSTALLATION STEPS



### 2. The roller shutter box is fixed in place:

A. Place the glued stakeout template provided with the box on the installation part of the end plate base of the shutter box, and place it as shown in the figure below. After placing it, stick masking paper along the edge of the template. After the masking paper is pasted, remove the template and apply glue evenly within the range of the masking paper. About 5 minutes after the glue is applied, the masking paper is torn off, and the roller shutter box is put in place.



## INSTALLATION STEPS



B. The roller shutter box is fixed in place



## INSTALLATION STEPS



### 3. Comparison and cutting of guide rails:



A. Contrast cutting arc ends



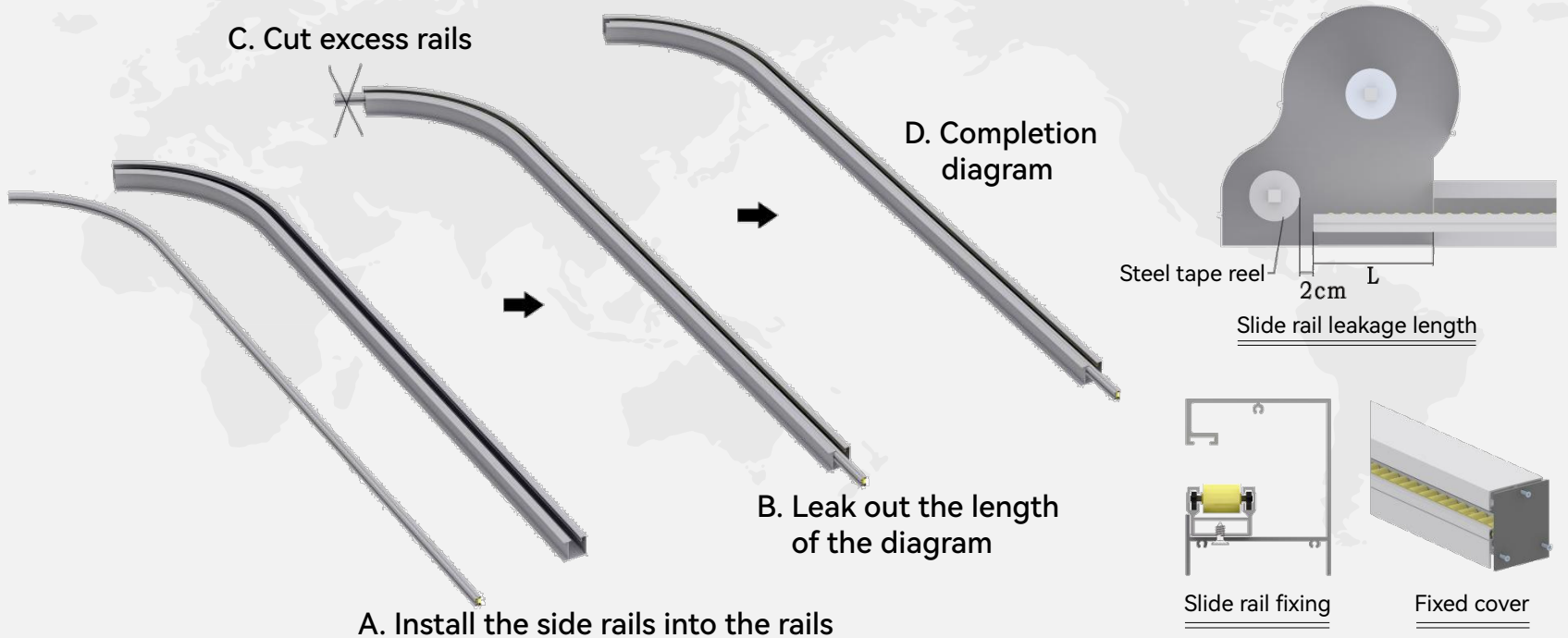
B. Compare cut straight ends



C. Comparing and cutting is completed

# INSTALLATION STEPS

## 4. Slide rail cutting and assembly:



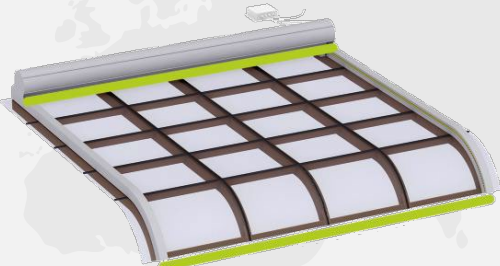


# INSTALLATION STEPS

## 5. Rail fixing:

A. Dimension review, drawing reference line

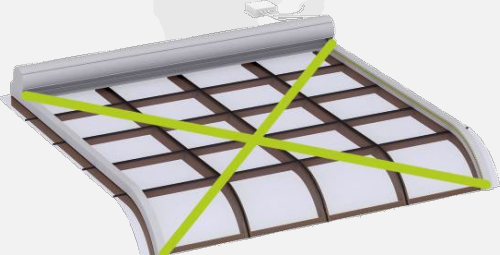
B. Fixed code installation (first use a drill to make a small hole, and then use a self-tapping screw to tap in at one time)



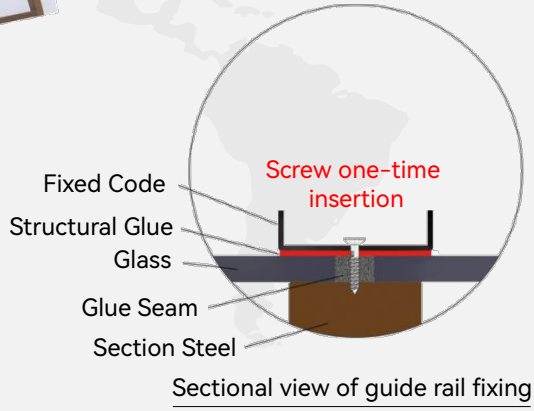
Top and Bottom Width Review



Fixed code installation

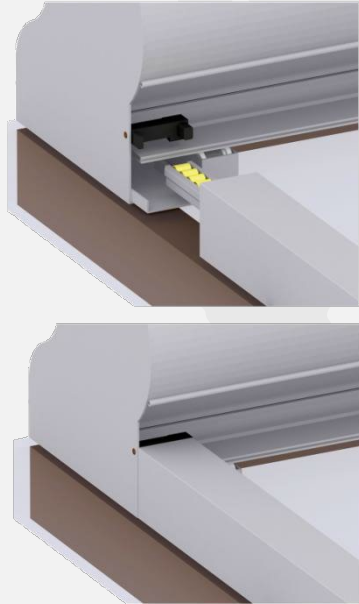


Diagonal Size Review



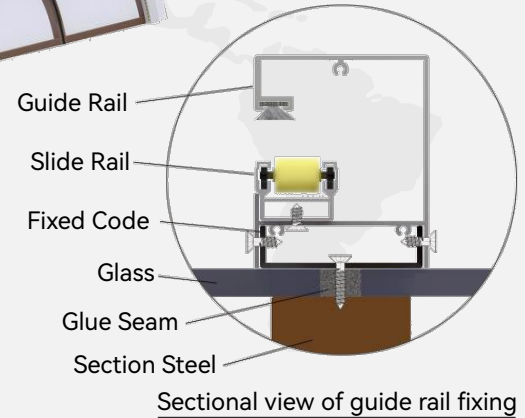
# INSTALLATION STEPS

## C. Rail Insertion



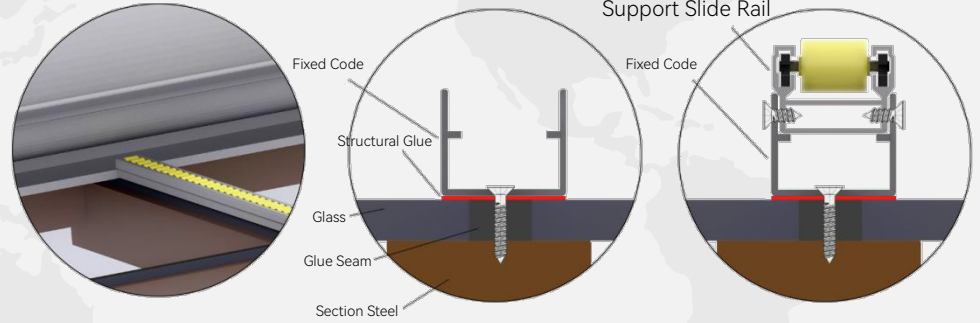
(Tighten the guide head and the guide rail with self-tapping screws)

## D. Rail Fixed



# INSTALLATION STEPS

## 6. Fixing of the supporting slide rail:



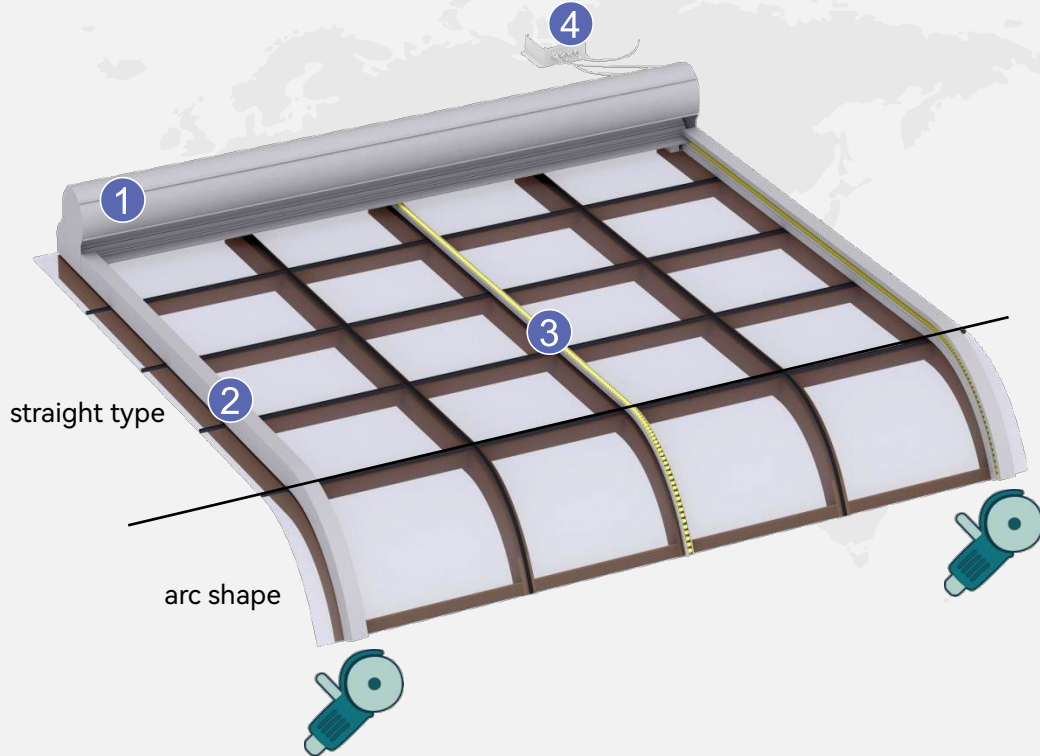
## INSTALLATION STEPS

### 7. Wiring, power supply, debugging, and installation completed.



Note: The control box should be placed in a sheltered place or fixed on the back of the shutter box with the end of the thread facing down. The fixing screw should not be too long, otherwise it will damage the shutter and affect the rotation of the shutter. Do not place the control box in a place prone to water accumulation.

# INSTALLATION SUMMARY



## The main steps:

1. Fixed roller shutter box
2. Fix the guide rail
3. Fixed support slide rail
4. Wiring power-on  
debugging is over

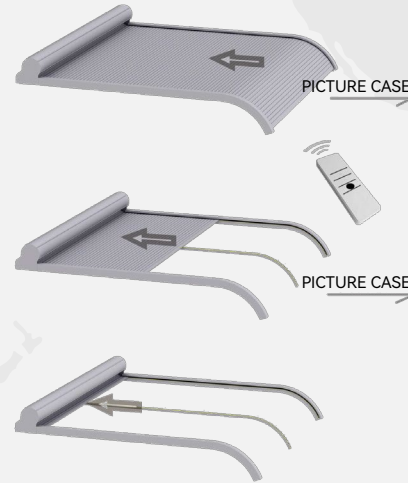
➤ Canopy installation is not complicated, it is only 1 more step than putting an elephant in a refrigerator.

# INSTRUCTIONS FOR USE

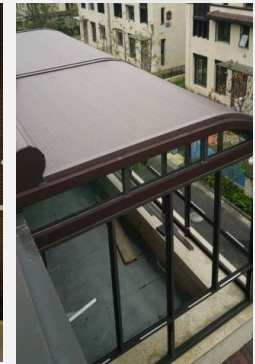


➤ Use of 55# and 42# full roller blinds

➤ 35# Use of sky star roller blind



# CASE PRESENTATION



# COMPARISON OF ADVANTAGES

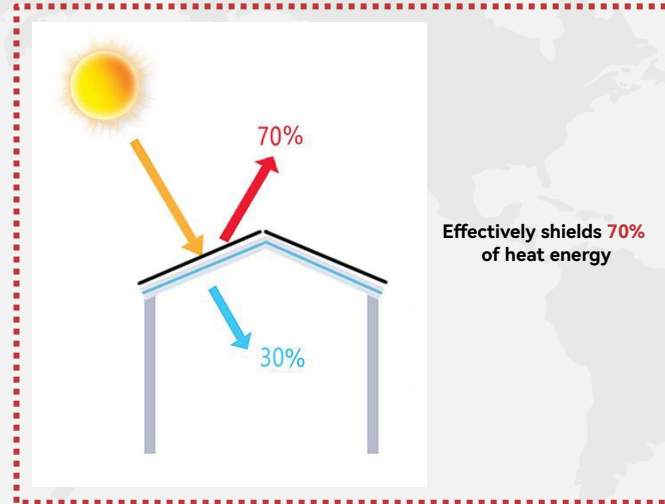
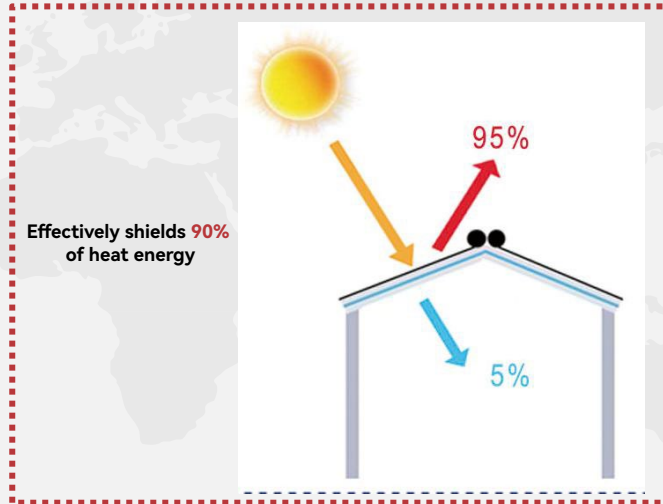
## SHADE EFFECT



### Our Outdoor Aluminum Canopy

PK

### Other People's Outdoor Canopy

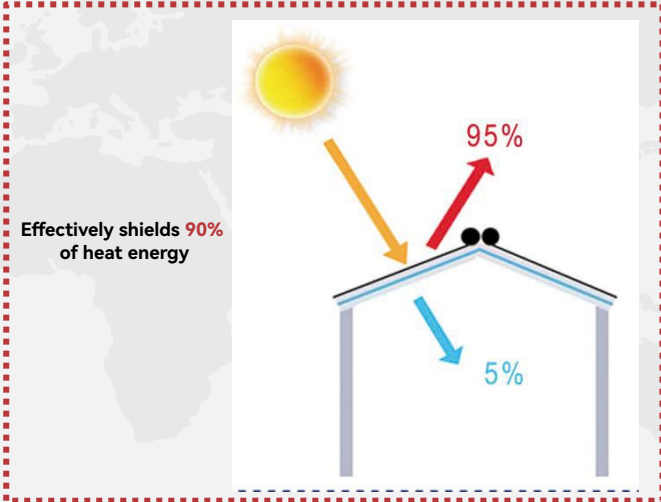


# COMPARISON OF ADVANTAGES

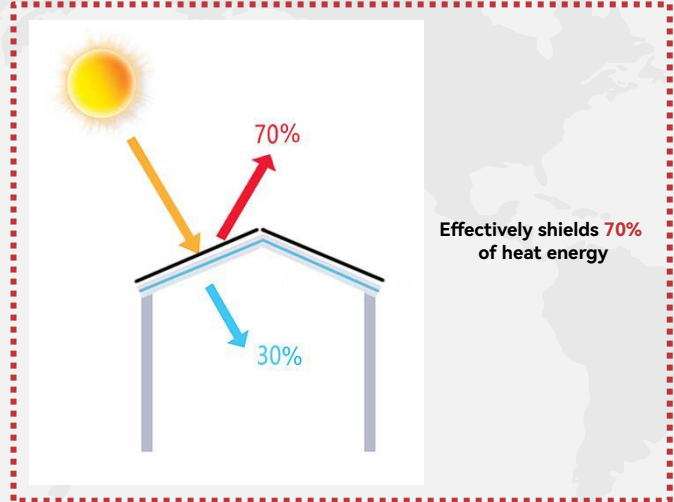
## SHADE EFFECT



### Our Outdoor Aluminum Canopy



### PK Other People's Outdoor Canopy





**Ready to source smarter? Get your personalised quote — fast.**

📱 **WhatsApp:** +27 79 721 1109

✉ **Email:** [info@stargate.ltd](mailto:info@stargate.ltd)

🔗 Or scan the **QR code:**



📄 *Simply share your **name, company, delivery address,**  
**and the products you need** (reference numbers or screenshots)  
with **quantities** — our team takes care of the rest.*